

# MEDICAL TECHNOLOGY IN COMMUNITY CARE

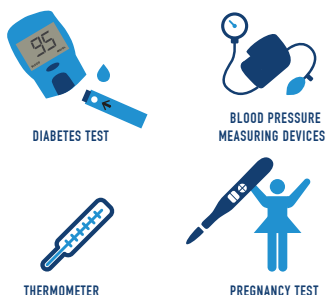
## 6 BROAD CATEGORIES OF MEDICAL TECHNOLOGY

### PREVENTIVE



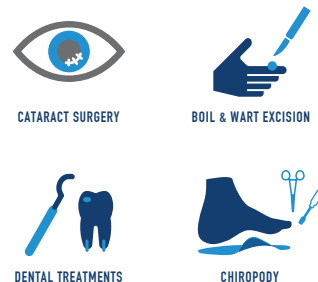
To prevent disease, injury or other conditions. Used by citizens and healthcare professionals.

### DIAGNOSTICS



To diagnose conditions. Used by citizens and healthcare professionals.

### INTERVENTIONS



Often used outside of hospital. Used by healthcare professionals.

### THERAPEUTIC



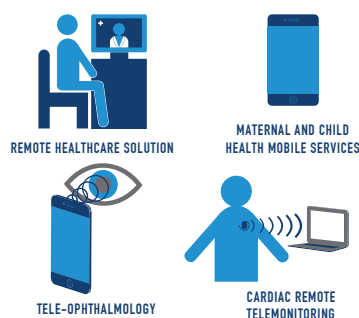
To treat patients in the home or after hospital stay. Require support from healthcare professionals. Used by patients and carers.

### ASSISTIVE



To manage or restore bodily function. After initial fitting patients and carers take over the care.

### MONITORING / E-HEALTH



To treat patients in the home or after hospital stay. Require support from healthcare professionals. Used by patients and carers.



 **MedTech Europe**  
from diagnosis to cure

**Community Care is treatment received outside of a hospital**

- Home
- Institutionalised Homecare
    - > Elderly Nursing / Care Home
    - > Palliative Home
    - > Psychiatric Home
    - > Specialty Doctors
- General Practitioner Service
- Out-patient Clinic / Ambulatory Care
- Rehabilitation / Recovery Centre
- Specialist Clinic
    - > Physiotherapy
    - > Podiatry
    - > Optician/Ophthalmologist
    - > Dentist
- Sale, Supply And Treatment
    - > Pharmacist
    - > Bandagist
    - > Dispensing Appliance Contractor