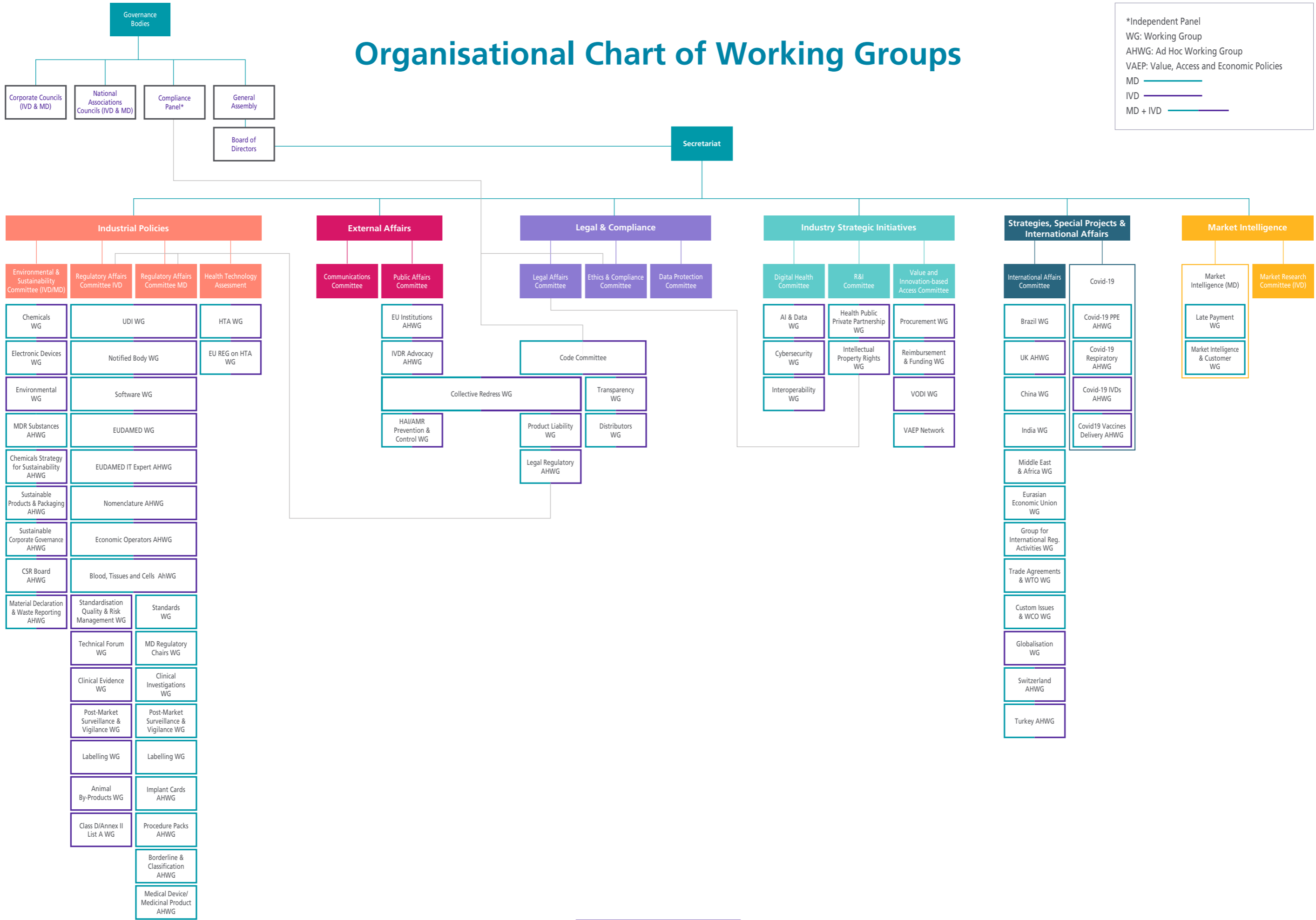
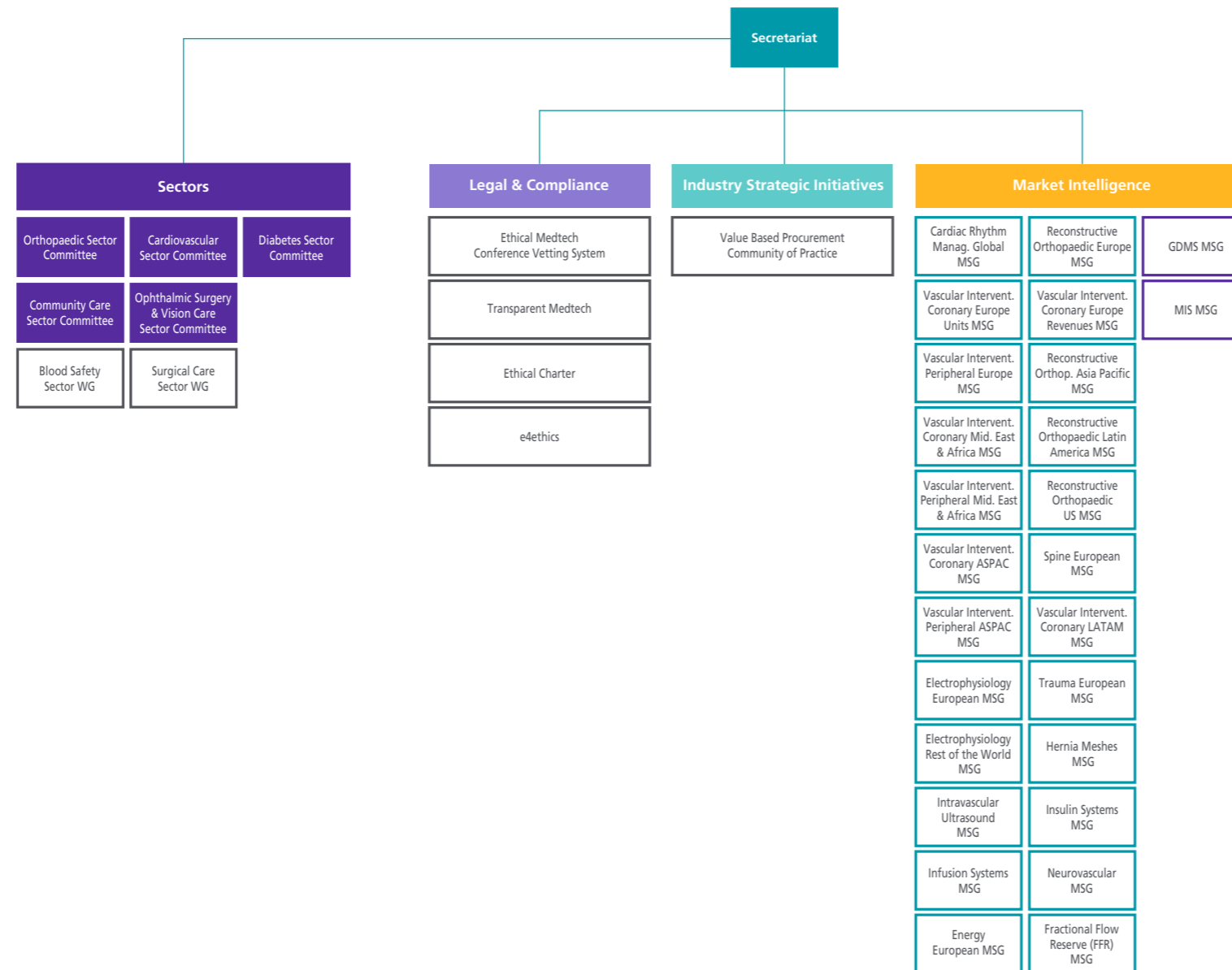


Organisational Chart of Working Groups

*Independent Panel
 WG: Working Group
 AHWG: Ad Hoc Working Group
 VAEP: Value, Access and Economic Policies
 MD ———
 IVD ———
 MD + IVD ———



Organisational Chart of Working Groups – Additional Services



WG: Working Group
 MSG: Market Survey Group*
 MD ———
 IVD ———

* Participation in a Market Survey Group is open exclusively to companies who are active in the related medical technology segment and willing to contribute their data.