

Addressing the challenge of Type 2 diabetes

Diabetes is a growing pandemic in Europe...



More than **61M people**¹ are living with diabetes, and the numbers are rising



Type 2 (T2) diabetes accounts for **more than 90%** of cases²



Over **1 in 3 adults**¹ are undiagnosed and not receiving proper care

...leading to serious consequences if not effectively managed

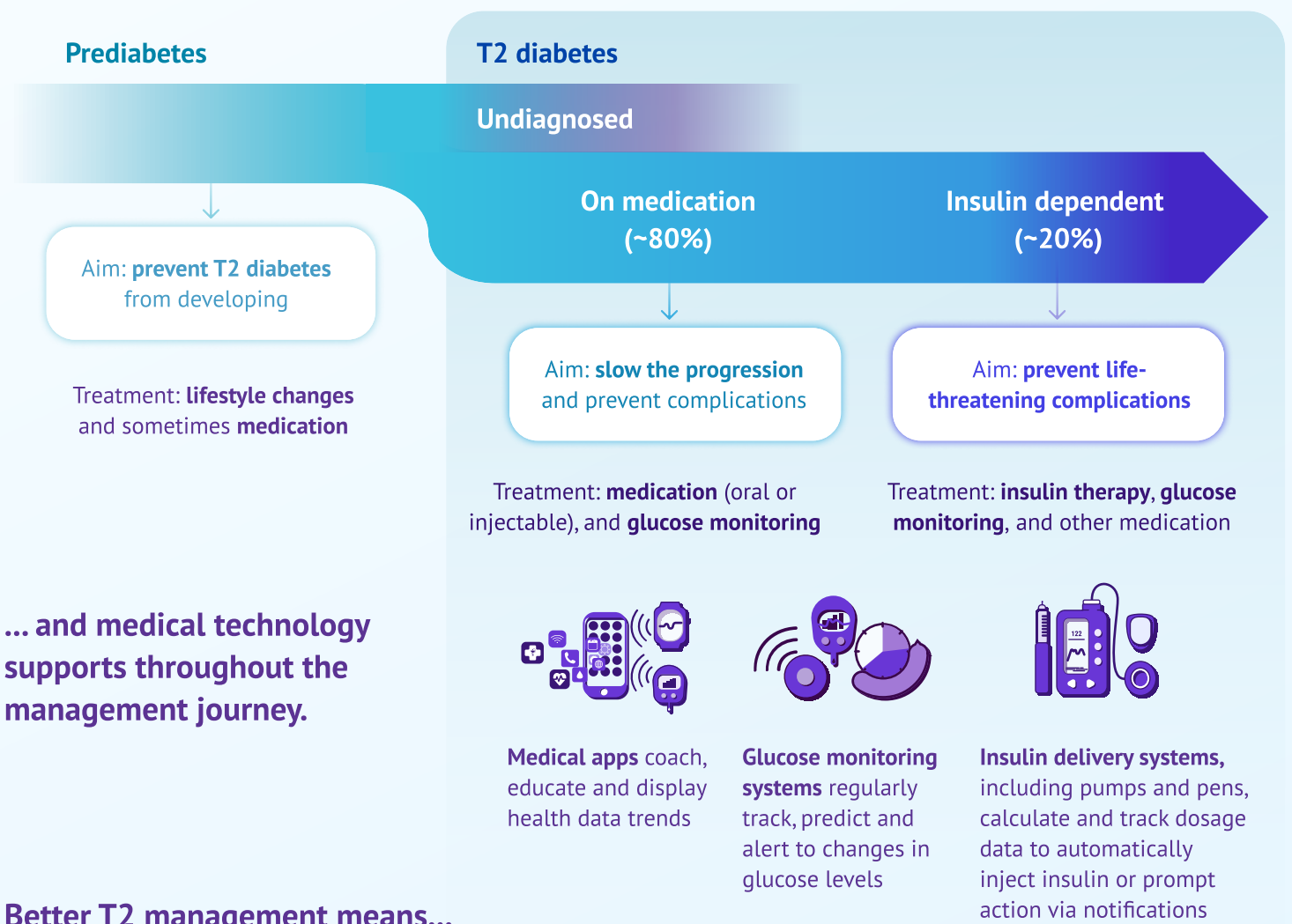


A higher risk of severe complications, such as cardiovascular events, blindness, kidney failure, and lower limb amputations³



...and more hospitalisations, which account for over half the total healthcare costs⁴ of T2 diabetes putting further strain on health systems

The management needs of T2 diabetes evolve as the condition progresses...



Better T2 management means...

- ✓ **Better health outcomes**⁵ and **higher quality of life**⁶ for people living with diabetes
- ✓ **Fewer health emergencies and severe complications**⁷, including cardiovascular events
- ✓ **Better decision-making support**⁸ for care teams and health professionals
- ✓ **Reduced strain**⁹ on individuals, care teams, health systems and society

¹Source: [IDF Factsheet](#), (2021)

²Source: Diabetes UK, ['What is Type 2 Diabetes?'](#)

³Source: WHO. [Diabetes Factsheet](#), (2021)

⁴Source: Jönsson, B. [Revealing the cost of Type II diabetes in Europe](#). Diabetologia 45, S5–S12. (2002)

⁵Source: Martens T, Beck RW, Bailey R, et al. [Effect of CGM on Glycemic Control in Patients With Type 2 Diabetes](#). JAMA 325(22). (2021)

⁶Source: Dodaiah, S., Shwetha, G., et al. [Medical technology intervention in improving the quality of life among the type 2 diabetes mellitus patients](#). International Journal Of Community Medicine And Public Health, 8(10), 4806-4811. (2018)

⁷Source: Evans M, Welsh Z, Ells S, Seibold A. [The impact of flash glucose monitoring on glycaemic control as measured by HbA1c](#). Diabetes Ther;11:83–95 (2019)

⁸Source: Choudhary et al. [The Challenge of Sustainable Access to Telemonitoring Tools for People with Diabetes in Europe](#). Diabetes Ther, p. 4. (2021)

⁹Source: Dixon, R. F., Zisser, H., Layne, J. E., et al. [A virtual type 2 diabetes clinic using CGM and endocrinology visits](#). J Diabetes Sci Technol. 14(5):908–1 (2020)

